

brassica

SANDWICHES + SALADS



NOW EXCLUSIVELY SEEKING LOCATIONS

PALM BEACH AND BROWARD COUNTY

"Nothing in the fast casual industry comes close to brassica. The quality is unmatched and the brand itself is second to none."

-Tom Prakas

PRAKAS & CO.
Florida's Premier Restaurant Broker



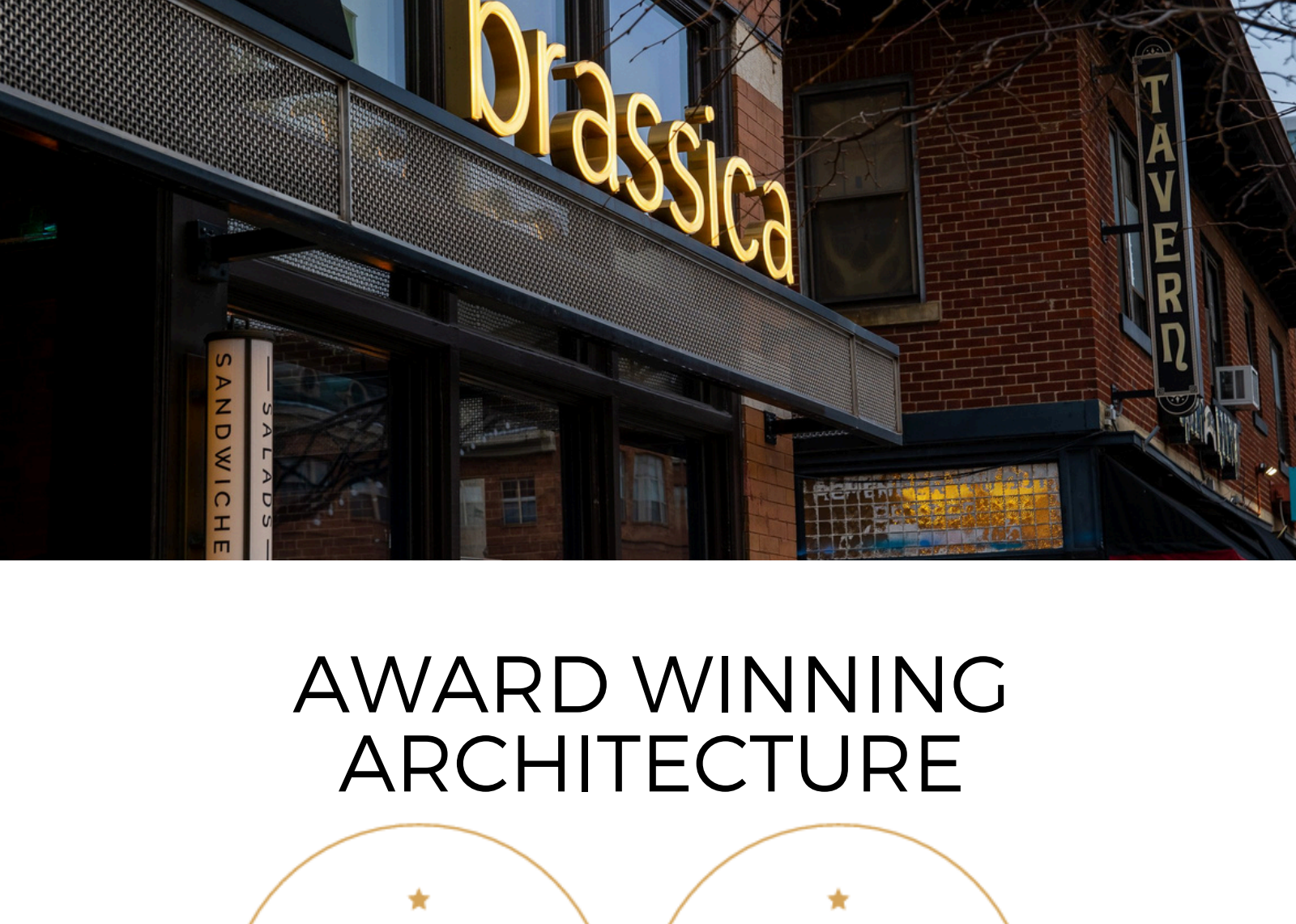
SITE REQUIREMENTS

CORNER/ENDCAP OR FREESTANDING

- Building Area:** 2,400–3,000 SF
- Parking:** 50—can have substantially less with urbanicity, street parking, or usable adjacent lots.
- Curbside Parking:** 5 branded curbside spots.
- Patio:** approximately 500 SF
- Use:** Fast casual Eastern Mediterranean



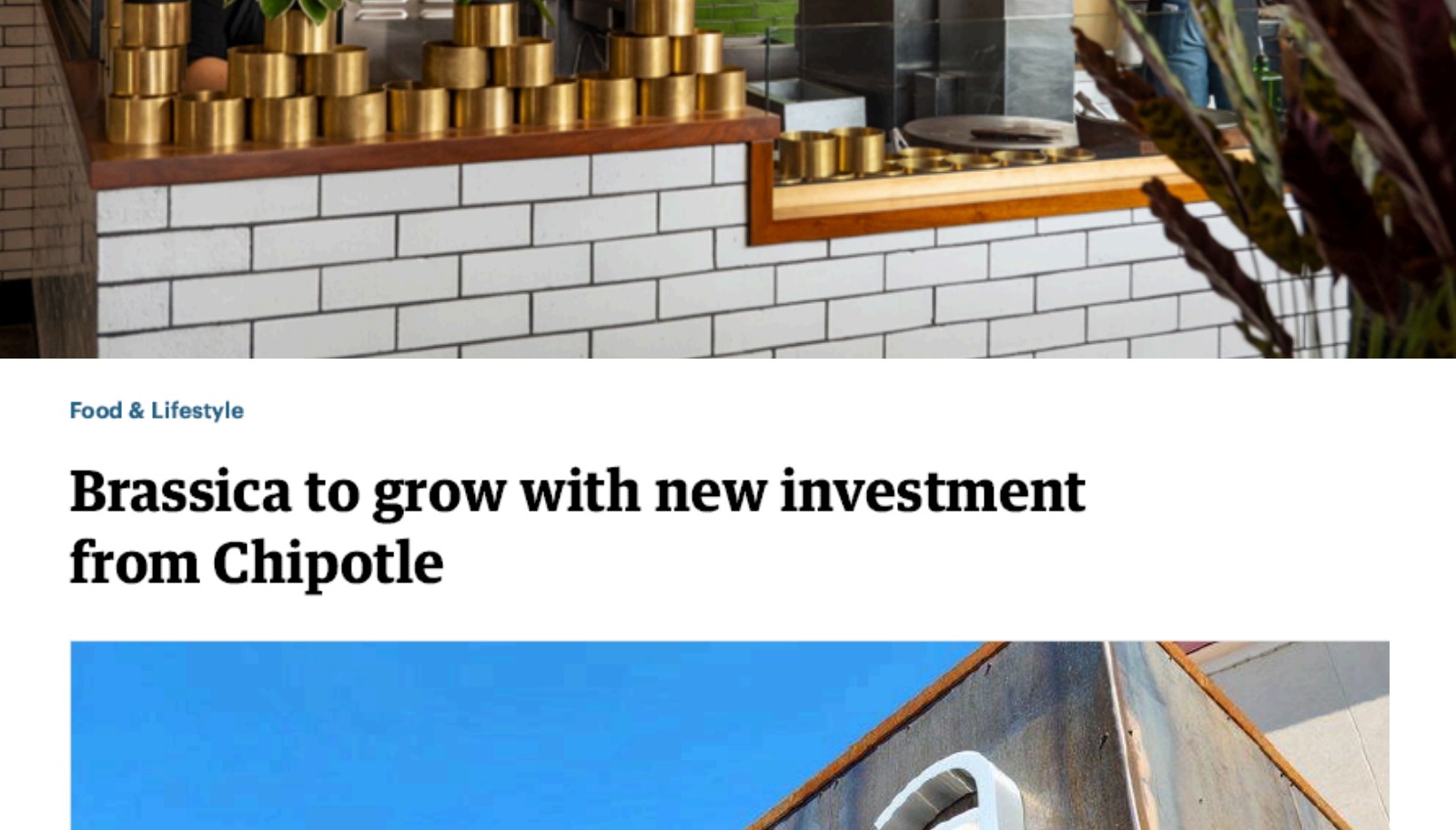
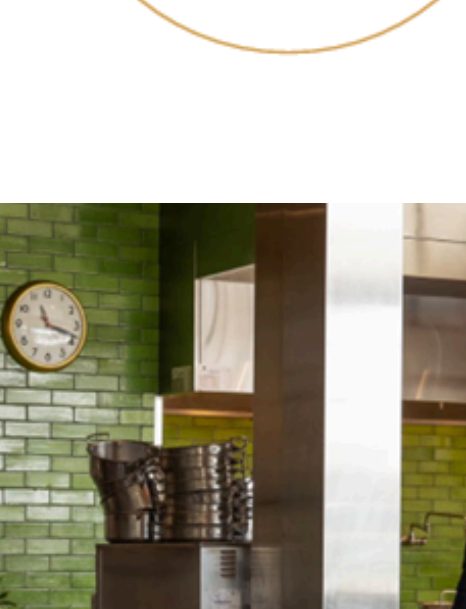
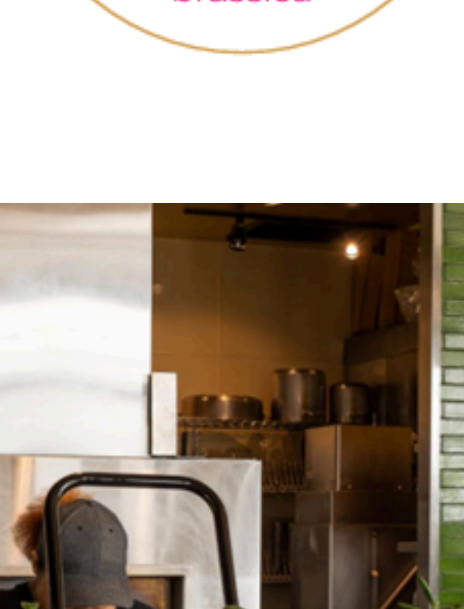
Seeking Space with Proximity to or Co-location with Upscale Retail, Gourmet Grocers, and Best In-Class Independent Eateries



AWARD WINNING ARCHITECTURE

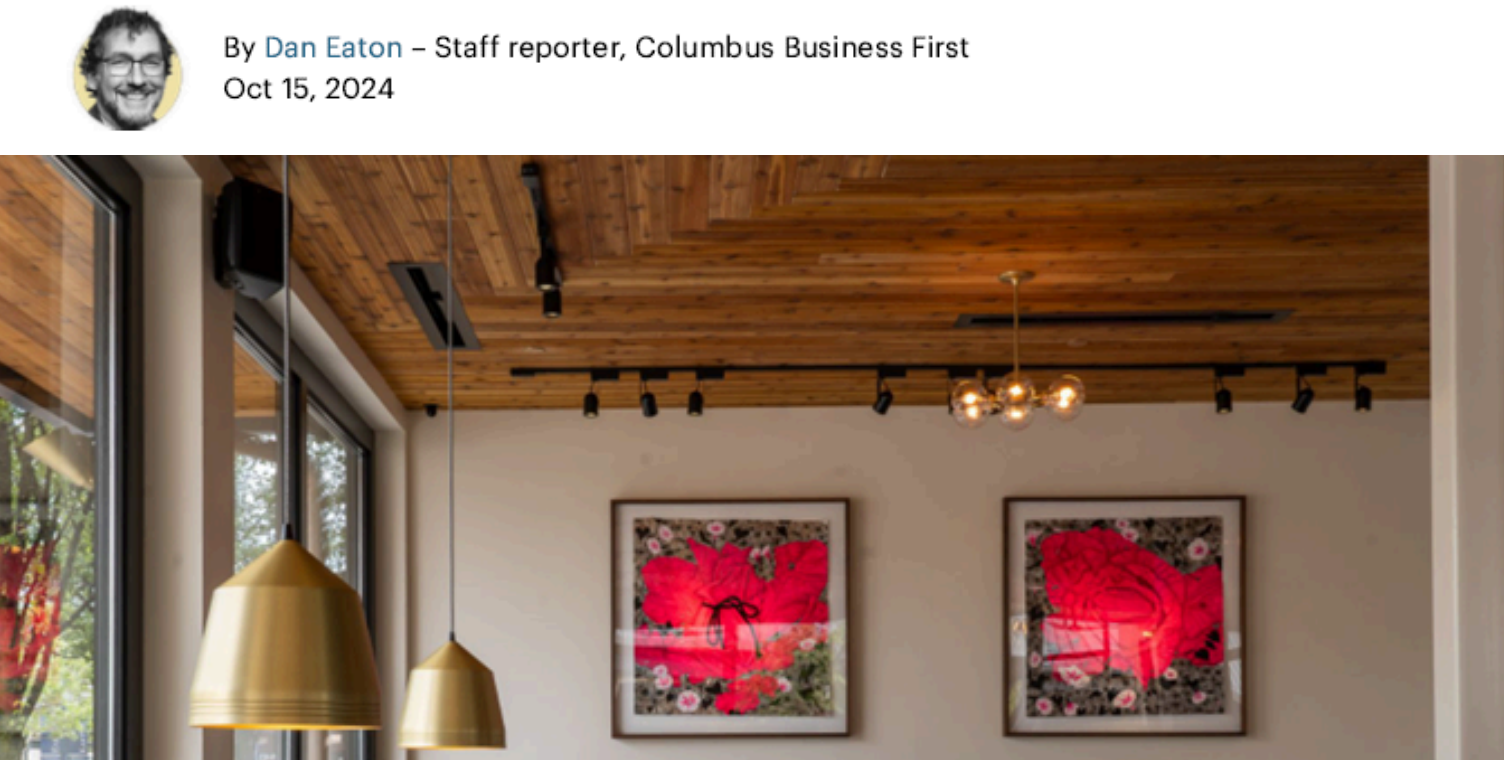


AWARD WINNING FOOD



Food & Lifestyle

Brassica to grow with new investment from Chipotle



Chipotle acquired a minority stake in Columbus-founded Brassica.

DAN EATON



By Dan Eaton – Staff reporter, Columbus Business First
Oct 15, 2024

